



Sky Gardens, Spinners Way, Manchester

£950 PCM

Ascend Properties are delighted to introduce to market this modern, furnished duplex apartment in Sky Gardens, a sought after development in Castlefield, the heart of Manchester City Centre.

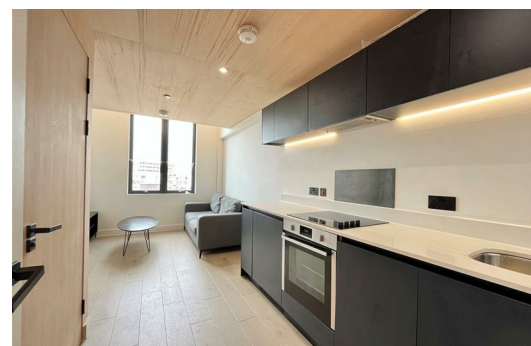
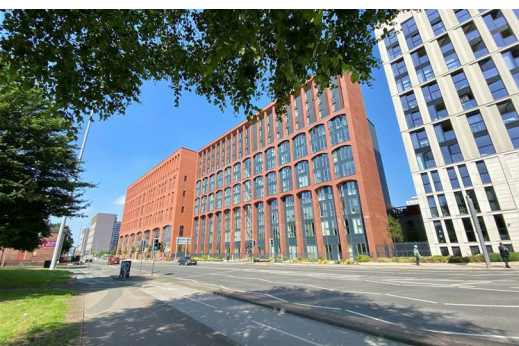
Castlefield is known for its vibrant, modern waterside living, complemented by appealing bars, restaurants, music and entertainment. Among the attractions are the celebrated Castlefield Bowl outdoor arena, the Castlefield Gallery and the popular Museum of Science and Industry.

This one-bedroom duplex apartment features one double bedroom, a stylish open plan kitchen and living area. There are two bathrooms, a downstairs W/C with en-suite accompanying the upstairs bedroom.

This development benefits from a Roof Garden with views across Manchester city centre and a bike storage.

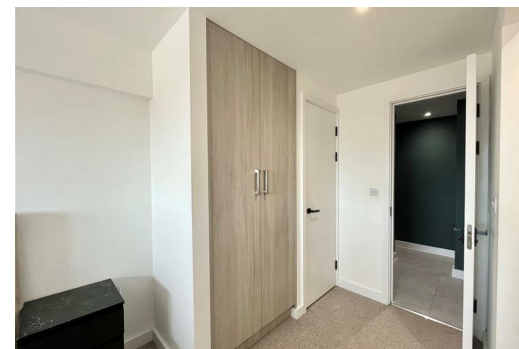
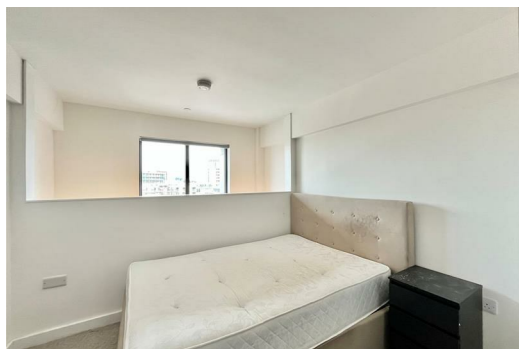
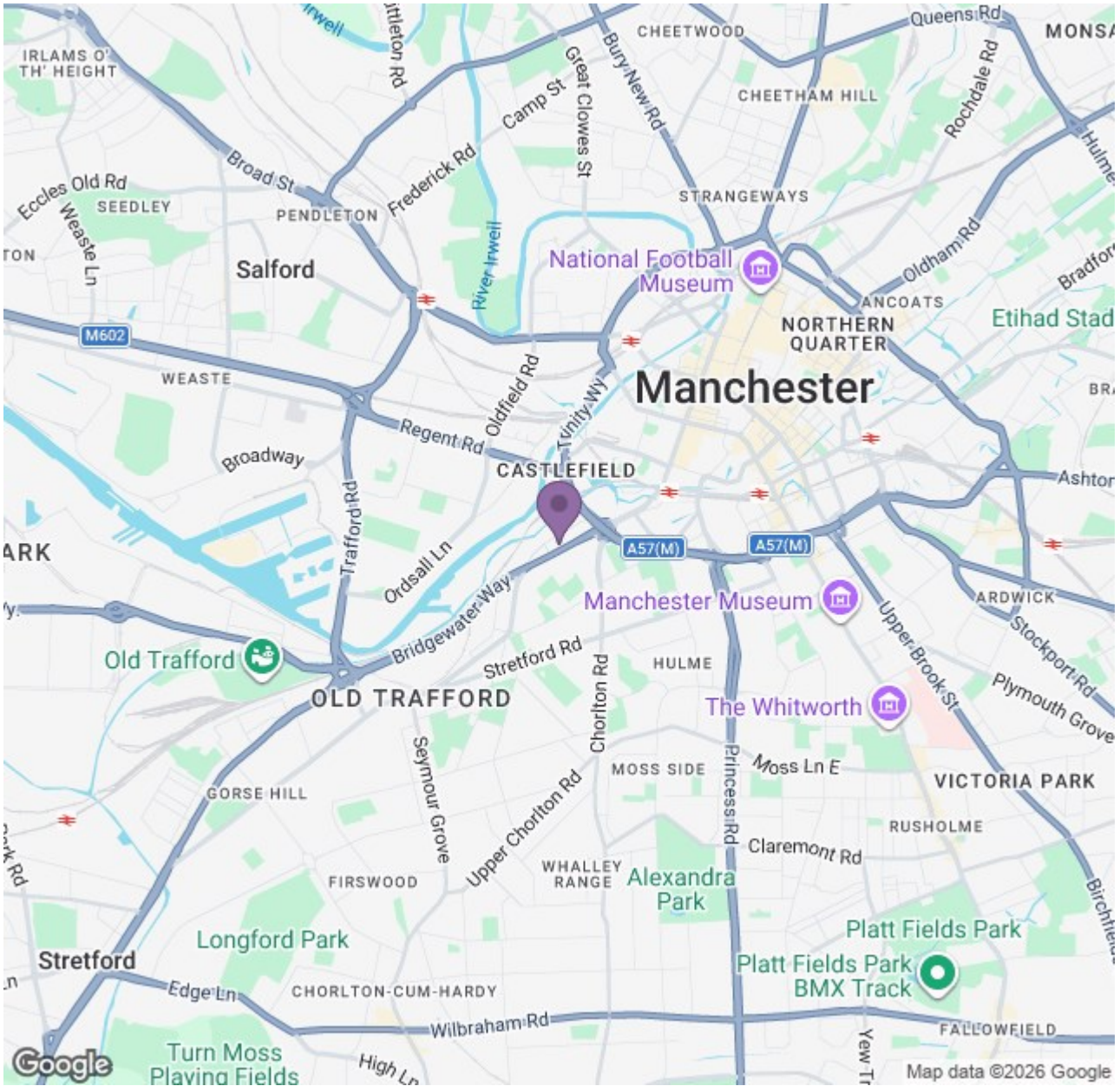
We anticipate a significant amount of interest for this property, so if you are interested please do get in touch with us as soon as possible.

Available Now
Deposit: £1,090
Council Tax Band: C
Furnished



Ascend

Built on higher standards



Energy Efficiency Rating		Environmental Impact (CO ₂) Rating	
Current	Target	Current	Target
B	B	C	C
85	85	35	35

Ascend

Built on higher standards